

Security Seals

For use in a range of industries

- Protect against tampering, contamination, theft
- Serial number traceability
- A range of seals for all requirements
- Comply with world customs and ISO security seal standards.

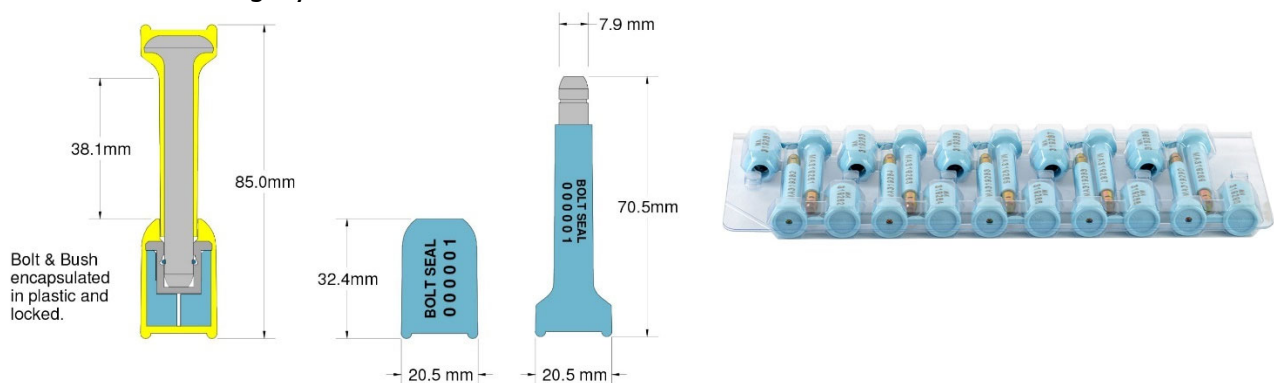
Ideal for both protection and identification, their unique security features discourage any attempt at tampering.

Used in a whole host of industries for sealing anything from food containers, medical equipment and clinical waste to gaming machines, roll cages, tanker valves, utility meters and intermodal containers plus much more.

- Secure, cannot be dismantled or cut without obvious traces
- Deterrent, immediate indication of tampering, pilfering or unauthorised entry
- Durable, high security and Customs approved.



Bolt Seal an ISO 17712:2013 (E) compliant high security barrier seal, designed for high value ISO container cargo shipments. The plastic-coated bolt and locking bush are laser marked with identical sequential numbers for added security and traceability. When locked the bolt spins freely to confirm seal integrity.

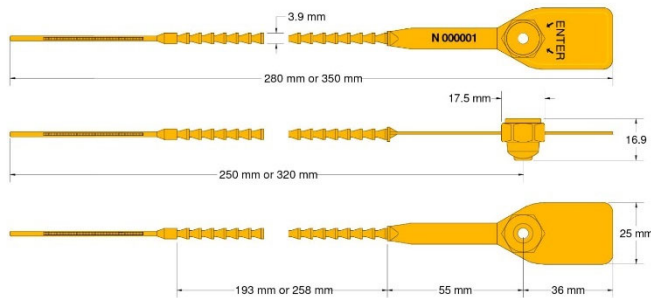


Seal Colour: Light Blue

Seal Type: Barrier Seal

Pack: 10 seals per Tray

Griptight Seal, a heavy duty pull-tight seal which allows the user to fasten the seal according to their specific size requirements. Operating length 32cms (overall 35cms) L2 as shown on Data sheet. Foil marked with consecutive numbers for added security and traceability. The acetyl insert is durable and will withstand freezing and boiling conditions, whilst the nylon body is flexible for easy use.

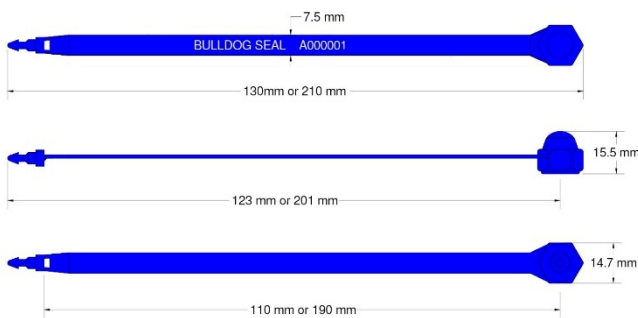


Seal Colour: Yellow

Seal Type: Pull Tight Plastic

Pack: 5 seals per mat

Bulldog Seal is a fixed length seal with one locking position. Operating length 19cms (overall 21cms) L2 as shown on Data sheet. Available in Blue, foil marked with sequential numbering for added security and traceability. Ideal for transport applications, such as sealing vehicle doors where a seal under tension would break due to excessive flexing. This seal can withstand boiling and freezing conditions, making it an ideal seal for fire doors.

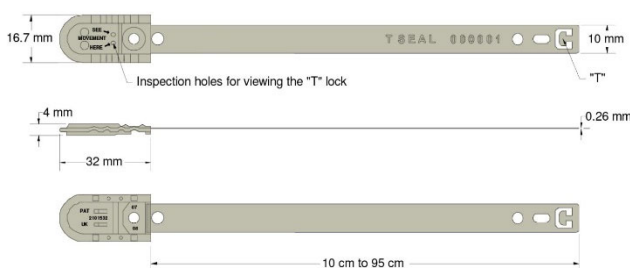


Seal Colour: Dark Blue

Seal Type: Fixed Length Plastic

Pack: 10 seals per mat

T Seal is a fixed length metal seal manufactured in matt Tin-plated steel. Operating length 18cm and embossed with consecutive numbering for added security. The design features a unique double locking action and inspection holes that allows both the user and security personnel to check if the seal has been correctly locked and not pre-tampered.



Seal Colour: Silver/Grey

Seal Type: Fixed length Metal

Pack: 25 seals per bundle